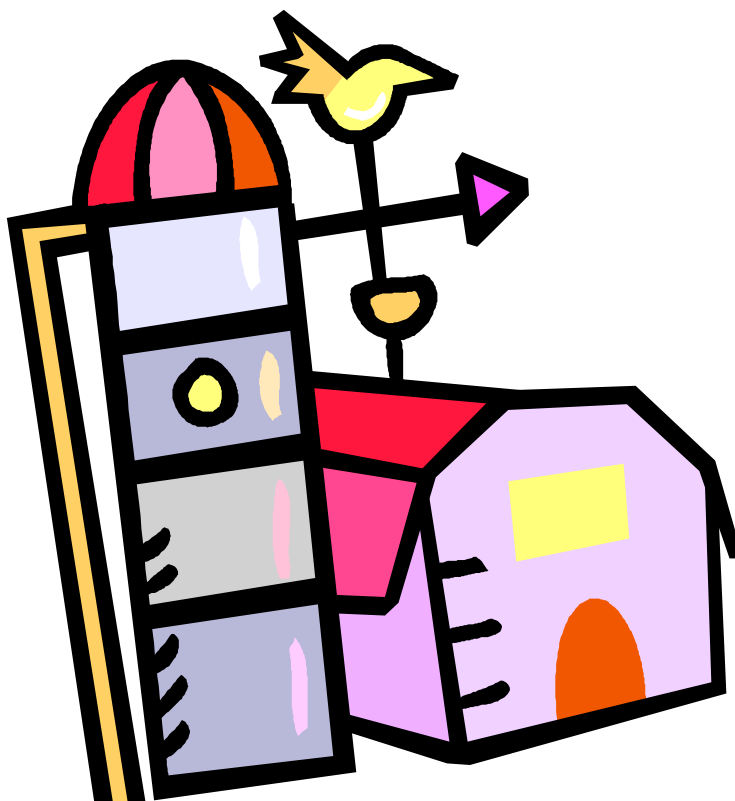


Hawk Mountain Scout Reservation



Cub Camping



Down on the Farm

2010
Leader Guide Book

CALENDAR FOR HAWK MOUNTAIN SCOUT RESERVATION

The following dates are for the 2010-2011 Camping Season.

April 18, 2010 Camp Meade Leader Orientation Meeting
HMSR – 1:00 PM – Marlin Miller Conference Center

May 16, 2010 Webelos Extended Leader Orientation
HMSR – 1:00 PM – Willits Dining Hall

SUMMER OF 2010

Camp Meade

Week 1 – June 20 –26, 2010
Week 2 – June 27 – July 3, 2010
Week 3 – July 4 - 10, 2010
Week 4 – July 11 - 17, 2010
Week 5 – July 18 - 24, 2010
Week 6 – July 25 – 31, 2010
Week 7 – August 1 - 7, 2010

Camp DuPortail

Week 1 – June 21 - 25, 2010
Week 2 – June 28 – July 2, 2010
Week 3 – July 5 - 9, 2010
Week 4 – July 12 - 16, 2010
Week 5 – July 19 - 23, 2010

Cub Resident Camp

Cub Super Weekend – June 19 - 20, 2010 Session 1 – July 28 – 30, 2010
Session 2 – July 30 – August 1, 2010

Webelos Extended Camp - Session 1 – August 8 - 11, 2010
Session 2 – August 11 - 14, 2010

SUMMER OF 2011

Camp Meade

Week 1 – June 26 –July 2, 2011
Week 2 – July 3 – July 9, 2011
Week 3 – July 10 - 16, 2011
Week 4 – July 17 - 23, 2011
Week 5 – July 24 - 30, 2011
Week 6 – July 31 – August 6, 2011
Week 7 – August 7 - 13, 2011

Camp DuPortail

Week 1 – June 27 – July 1, 2011
Week 2 – July 4 – July 8, 2011
Week 3 – July 11 - 15, 2011
Week 4 – July 18 - 22, 2011
Week 5 – July 25 - 9, 2011

Cub Resident Camp

Cub Super Weekend – June 25-26, 2011 Session 1 – August 3 – 5, 2011
Session 2 – July 30 – August 1, 2011

Webelos Extended Camp - Session 1 – August 14 - 17, 2011
Session 2 – August 18 - 20, 2011



HAWK MOUNTAIN SCOUT RESERVATION

HAWK MOUNTAIN COUNCIL #528/BSA

5027 POTTSVILLE PIKE • READING, PA 19605 • TELEPHONE 610-926-3406 • FAX 610-926-4965

January, 2010

Dear Cub Camping Coordinator,

We would like to invite you to join us “Down on the Farm” at Cub Scout camp this summer. This theme promises to provide another great adventure for your Scouts.

This book is designed to help you prepare for the upcoming camping season. We have combined camping information into one book to simplify your planning. Please review the information enclosed carefully. Print and copy the appropriate pages and distribute them to any adults who will be attending camp.

We look forward to seeing you at camp this summer. Come prepared to have **FUN!**

Sincerely yours in scouting,

Roberta Conrad
Cub Camping Director

General Information

Campership

Each pack is encouraged to establish its own Campership Fund. The Hawk Mountain Council solicits Campership Funds and disburses them upon written request. Camperships are based on family, Pack, and Council cooperation. Applications may be procured at the Council Service Center. **All applications must be received by May 1st.** All information is strictly confidential.

Insurance

Your camp fee includes accident and sickness insurance coverage on every registered Cub Scout and adult leader. Insurance does not cover additional unregistered adults and siblings who may attend. This is why every cub must be on your charter and fully registered. All bills must be promptly submitted to the Camp Director for payment

Refunds

No refunds will be given except for circumstances of illness or death in the immediate family. If a refund is requested under these circumstances, the request must be submitted in writing by August 20, 2009. Any refunds given will be subject to a \$5 processing fee.

Medicals

A medical history form is required for each Cub Scout, Adult, and Sibling BEFORE coming to camp. The health history must be signed by the boy's parent or guardian. The form does not require the signature of a doctor. These forms are available at the Council Service Center and at each District's April or May Roundtable.

The Camp maintains a Health Lodge which is staffed by a Health Officer at all times. There are local doctors and hospitals on call for emergencies. **All accidents must be reported to the Health Officer. Please remember our Health Officer provides first aid, not medical treatment.**

Any boy not having the medical form signed by their parents will not be allowed to participate in any program. Siblings must fill out an adult health form. Any adult or sibling in camp, whether it be 1 day or 5 days, must have a completed health form. New medical forms must be filed each year. Do not use a previous year's form.

Swim Testing

Swim Testing may be done off site (away from Camp) by a certified instructor. (see form for qualifications). **PLEASE READ THIS NEXT STATEMENT VERY CAREFULLY.** If you are the Unit Leader who signs the Swim Classification Record, you are ultimately responsible to see that each person is classified properly. **DON'T SIGN** a boy off as a swimmer if he is not. Be precise on classifications. If something should happen to someone who is classified incorrectly, you may be held responsible.

Swim testing will still be offered at camp on Thursday evenings at 7:00 PM. If you are attending Day camp week 1, swim testing will be Tuesday, June 15, 2010. You must call the week before your week of camp. (Day Camp Telephone Number: 570-754-4300) Completed Medicals are necessary for participation in the swim testing. There will be no

swim test given during Day Camp. Swim testing will be available during Cub Resident and Webelos Extended.

Trading Post

A Trading Post is operated in camp for the sale of camping supplies, camp souvenirs, and a limited supply of food items. Please caution boys about bringing excessive amounts of money to camp.

Advancement

The major intent of the Cub Camping Program is fun! Boys will also learn while enjoying themselves! **The camp staff does not keep track of advancement at camp.** Your leadership will keep track of any advancements or electives completed at camp. Your Pack has the option of accepting these recommended achievements.

Problems

If at any time during your stay at camp problems arise, please direct any comments to the Program Director or Camp Director. Solutions come from sharing the difficulty. Individual staff members often do not have the ability to solve the problem. Let the management staff assist you in your needs.

Camp Security

During your stay at camp you may find that an emergency arises. Emergency plans will be discussed with unit leaders prior to and upon arrival. Emergency phone numbers for the Health Officer and Ranger are posted at the Cub Administration Building. Also, residence locations of key staff persons will be shared at the Camp Leaders' Meeting when you arrive. We can request verification of any individual visiting camp. If a Scout needs to be picked up by someone other than parent/legal guardian, we reserve the right to see identification and to check approval from the parent/legal guardian.

Staffing

The National Camp School of the Boy Scouts of America certifies all Directors. Additional staffing during your stay may be provided by volunteer Scouters from Hawk Mountain Council. If you have additional adult leaders attending camp with your pack, please inquire if any adults would like to offer their help with various staff positions. Any interested adult may contact the Council Service Center.

Special Needs

Please inform the Reservation in advance of any youth or adults who are physically or emotionally challenged. Knowing ahead of time allows us to make appropriate accommodations.

Dietary Needs

Individuals who require a special diet while at camp should contact the Cub Camping Director at least two weeks prior to your attendance at camp.

National and Local Policies

- Packs are required to have 1 adult per den per day in attendance at camp as long as the den has less than ten Scouts. Your den will be joined with another den in order to meet the two-deep leadership requirements of the Boy Scouts of America.
- All vehicles will be kept in the assigned parking area.
- In compliance with Pennsylvania State Health and Safety Codes, no dogs or other pets are permitted in camp during the camping season.
- Any Scout who is absent or a no-show must be verified by a Pack leader at the discretion of the Camp Director.
- Any Scout or adult leader leaving camp at anytime other than the day's end needs to check out at the Day Camp Office prior to departure. Boys will only be released to their parent or guardian with written permission and proper identification.
- Per National Standards – For males, brief tank suits, such as Speedos are inappropriate. If preferred, males may wear brief tank suits but they must be worn underneath boxer or gym style swim trunks. For females, bikini suits are not suitable.
- Per National policy – **No one 18 and over is allowed in the youth changing area or shower house.**
- Per the National Council Policy on Transportation of Scouts, these are the necessary guidelines:
 1. All drivers must possess a valid license.
 2. All drivers must be 21 years old or older.
 3. The vehicle must have a valid inspection sticker.
 4. A relief driver is a good precaution.
 5. Minimum Liability Insurance of \$50,000-\$100,000.
 6. Truck beds may not carry passengers.
 7. PA law requires seat belts to be worn. One boy per seat belt is required.
 8. Traffic regulations must be adhered to.
 9. If bus transportation is utilized, proper licensed and certified drivers and insurance verification must be given to the pack leadership.
- Smoking **is prohibited in all buildings and program areas.**
- A tour permit is required for you pack to attend camp.

Cub Day Camp Information

Fees

The cost for a boy at Day Camp is \$115.00 per week. This fee covers all program materials, insurance coverage and meals. The fee is payable at the Council Service Center as per the following schedule:

1. \$ 10.00 per boy deposit due by March 1, 2010.
2. \$ 100.00 per boy additional deposit due by June 1 (regardless of week attending)
3. **A \$10.00 late fee will be assessed per boy if you pay at camp.**

Registration

You need to have the following items prepared and ready to turn with final payment:

1. Cub Scout roster forms. (Keep pink copy.)
2. Adult/Sibling roster forms. (Keep pink copy.)
3. Cub Scout medical forms.
4. Adult/Sibling medical forms.
5. Rollover form (next year's reservation form)
6. Final Transmittal Form
7. Photo Release Forms

Registration material must be turned in at the Council Service Center by June 1st with final payment.

Turning these registration forms in early allows the camp management to plan more effectively.

Leadership

Since your pack will be divided into two advancement levels, each Pack must provide **1 adult per level per day or 2 if you have more than 10 boys.** Please make every attempt to secure a Den chief for your pack. This will help in many areas in camp especially at the bath house.

Schedule

The Day Camp Program day begins promptly at **8:50 AM** and ends at **3:30 PM** Monday - Friday. Check-in for units begins at 8:15 AM. This is critical to the success of the entire camp, as the start of programs for all Cub Scouts may be delayed. Your daily schedule will be shared with your leaders upon arrival.

In the event that you cannot make it to camp by 8:30 AM on Monday morning, please notify the Camp Director ASAP by calling 570-754-4300 (Cub Administration Building).

All vehicles will be kept in the assigned parking areas. **One adult per pack is asked to report to the Cub Administration building to take attendance and receive group assignments and program books.**

Lunches

Camp will provide a hot lunch for each Cub Scout every day. The cost is included in the camp fee. Siblings and adults may purchase lunch each day for \$5.00 or buy a meal ticket for all five days for \$20.00.

All Cubs and Webelos will have time to visit the Trading Post following their lunch.

Clothing

The boys should wear comfortable clothing suited to the weather conditions. Pack tee shirts are a special way to have your boys recognized. Please be sure to mark all clothing articles with name and Pack number.

Camp activities include a lot of walking to the various activity areas. Comfortable shoes are highly recommended. Sandals and thongs are not permitted.

Every day each boy must bring: swim suit, towel, and rain gear.

A baseball cap is recommended.

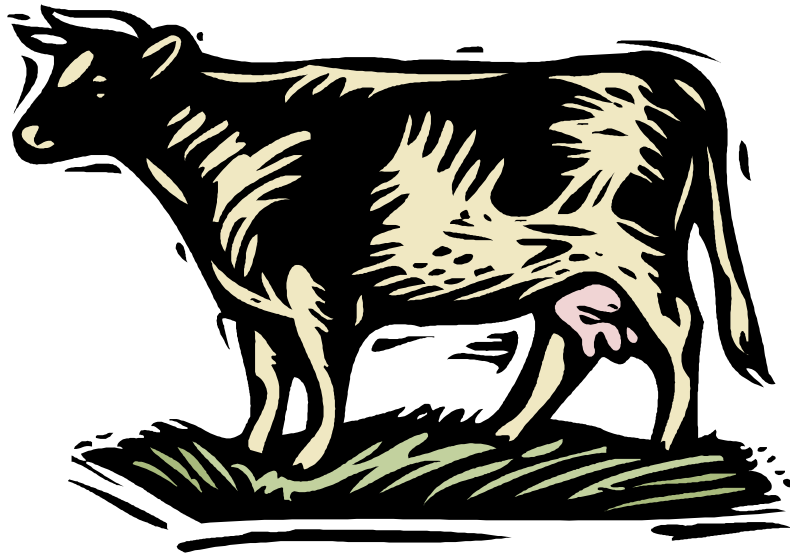
A light backpack is recommended for carrying personal gear.

Each boy should bring a water bottle.

Reminder: Day Camp is conducted rain or shine!

Program Notes

Wednesday will be Crazy Hat Day. Friday will be Costume Day. Both days should be theme related.



Day Camp Checklist

January & February

- Promotion efforts at your pack's Blue and Gold Banquet
- Plan necessary fund raisers to support your trip
- Give out parent information sheets

March & April

- Line up transportation and adults
- Turn in \$10.00 deposit fee by March 1, 2010
- Attend Leader Orientation at the Marlin Miller conference Center at the Hawk Mountain Scout Reservation on Sunday, April 18, 2010 at 1:00 PM.

May & June

- Distribute medical forms
- Collect the remainder of the fees and the necessary forms
- Swim checks – decide if, when and where
- Final payment of \$105.00 fee by June 1, 2010 (**regardless of week**) along with all paper work
- Sign up for Day Camp 2011

June & July

- File tour permit at the Beaver Family Service Center
- Enjoy your week at camp

Cub Resident Camp Information

Fees

**Scout Fee: \$115.00 - If paid prior to arrival
\$125.00 - If paid on arrival**

Adult Fee: \$35.00

Reservation Fee: \$50.00 deposit is required with your reservation form. This money is applied to your final total.

**Payment Schedule: \$20.00 per Scout attending due April 1
\$95.00 final payment June 1
\$35.00 per adult due June 1**

It is extremely important when signing up for camp that exact numbers are reserved. Camping spaces are limited.

Registration

You need to have the following items prepared and ready to turn with final payment.:

- 1. Cub Scout roster forms. (Keep pink copy.)**
- 2. Adult roster forms. (Keep pink copy.)**
- 3. Cub Scout medical forms.**
- 4. Adult medical forms.**
- 5. Final Transmittal Form**
- 6. Photo Release Forms**

Arrival

Time of Arrival: On your first day you should plan to arrive between 5:30 P.M. and 6:30 PM.

Parking & Unloading: All vehicles must be parked in the parking lot. No vehicle will be allowed to go to campsite until a pass is issued. This pass may be obtained upon check-in. The one vehicle may enter with gear, but must return to parking lot. NO ONE IS ALLOWED TO RIDE IN THE BACK OF AN OPEN VEHICLE.

Check-In: One leader must go to the Cub Scout Administration Building to register. Please bring the Pack Roster Forms at that time. You will then be directed as to where you should proceed to next.

Leader Meeting: A leader meeting will be held at 7:45 PM. The location will be announced. Important information about your stay will be addressed at this meeting. Make sure one leader is in attendance. This is mandatory and necessary to your camping experience. Please be prompt!

Crackerbarrel: At 8:30 the evening of your arrival, there will an opportunity to meet the staff and enjoy a snack together. You are invited to bring board games or table games to play at this time.

First Meal: The first meal at camp will be breakfast.

Uniforming

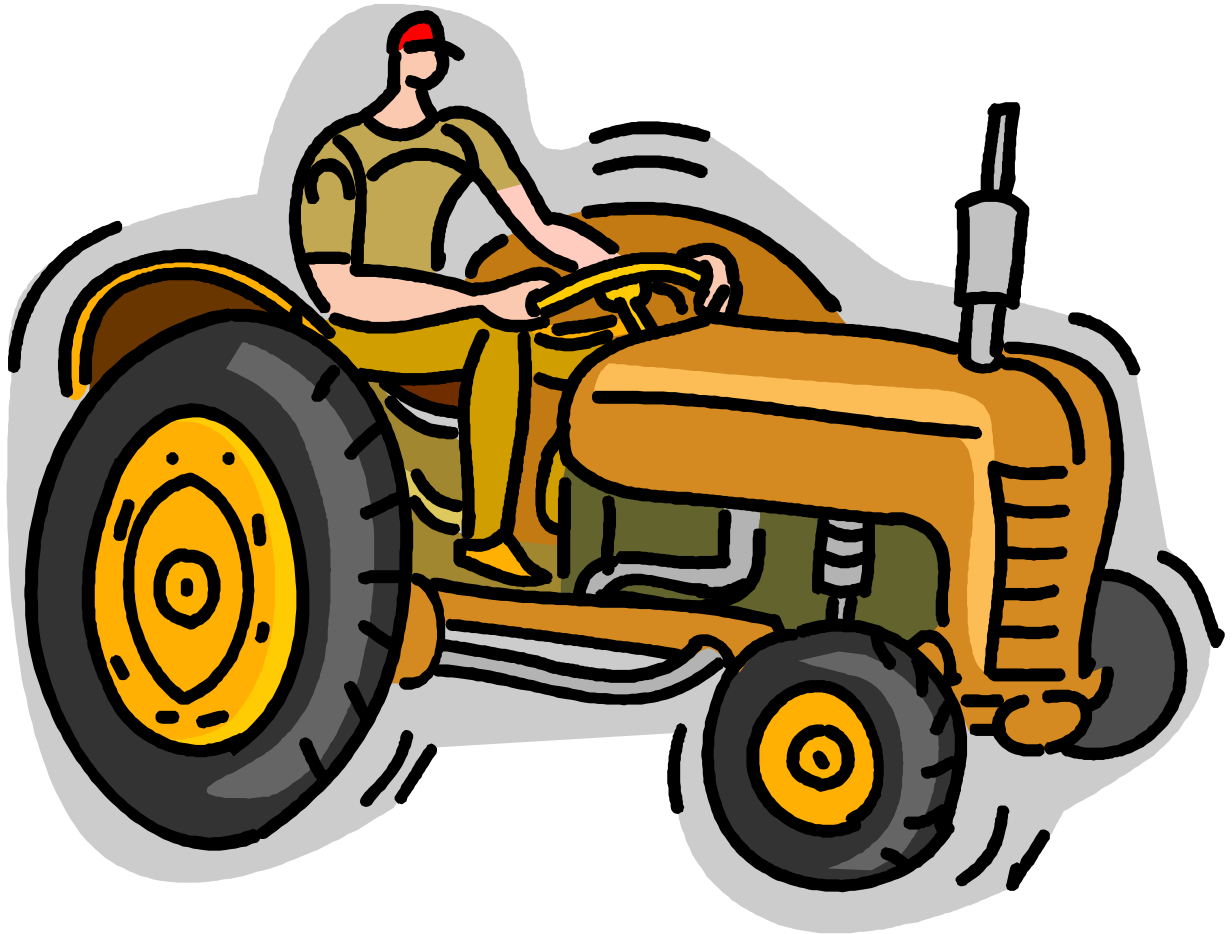
Uniforms will be required for dinner and evening flag ceremonies.

Activities at Camp

The morning program will consist of assigned activities on a rotating schedule. You will receive this schedule at camp. The afternoon and evening program will give you an opportunity to choose from several activities so that you may create a unique program that meets your Pack's needs.

Departure

Your pack will be dismissed by noon on your final day.



Webelos Extended Camp Information

Scout Fee: \$140.00 - If paid prior to arrival
\$150.00 - If paid on arrival

Adult Fee: \$70.00 (See exception below)

Exceptions: One adult per Pack free.

Reservation Fee: \$50.00 deposit is required with your reservation form. **This money is applied to your final total.**

Payment Schedule: \$20.00 per Scout attending **due April 1**
\$120.00 final payment **June 1**
\$70.00 per adult **due June 1**

You need to have the following items prepared and ready to turn with final payment.:

1. Cub Scout roster forms. (Keep pink copy.)
2. Adult roster forms. (Keep pink copy.)
3. Cub Scout medical forms.
4. Adult medical forms.
5. Final Transmittal Form
6. Photo Release Forms

Time of Arrival: Whether your first day is Sunday or Wednesday, you should plan to arrive no earlier than 1:00 P.M. and no later than 3:00 PM.

Parking & Unloading: All vehicles must be parked in the parking lot. One vehicle may enter with gear, but must return to parking lot. **NO ONE IS ALLOWED TO RIDE IN THE BACK OF AN OPEN VEHICLE.**

Check-In: One leader must go to the Administration Building to register. Please bring the Den Roster Forms at that time. You will then be directed as to where you should proceed to next.

Swim Evaluations: Anyone that has not already been swim tested should have their swimsuit and towel available at check-in.

Campsite Set-Up: The rest of the afternoon is spent readying your campsite for your stay.

Leader Meeting: A leader meeting will be held at the Administration Building at 4:15 PM. Important information about your stay will be addressed at this meeting. Make sure one leader is in attendance. This is mandatory and necessary to your camping experience. Please be prompt!

Retreat Ceremony: The colors are retired daily. Please be sure to have your Pack in attendance. We strongly recommend they be in full uniform.

First Meal: Your first meal in camp is dinner. One Webelos and one leader should come to the dining hall 25 minutes before the evening meal for set-up. If your group is larger than 10 please plan to have an adult seated with each table. ***Please note there will be no visitor meals available due to the large number of Webelos and limited seating in the Dining Hall.**

- Uniforms are required at dinner and evening flag ceremonies.

ADVANCEMENT PROGRAMS

It is important to note that only the Webelos Den Leader may approve Webelos advancements. Camp Staff will instruct related skills but your leaders must record any advancement.

- The following Activity Pins will be offered during their stay at Camp.

Aquanaut	Artist
Forester	Geologist
Naturalist	Readyman

ALL OF THESE ACTIVITY PINS CAN BE COMPLETED WHILE AT CAMP.

There will be an opportunity to sign up for three activity advancements or electives when you arrive at camp. If you don't want to take three advancements - swimming, fishing, hiking, or conservation projects could also be elected. Sign-ups for activity advancements or electives will be easier if you decide which you will be taking advantage of before coming to camp.

ACTIVITIES PROGRAMS

Dens will be assigned to six adventure periods and will attend on a rotating schedule. You will receive this schedule at camp. The most important aspect of your stay in Camp with your Webelos is the time you take together to have fun as a Den. When planning your day, include the fun things that Scouts enjoy. Here are some possibilities.

- **Swimming:** Each day your Scouts will have the opportunity for a free swim period. These times are prescheduled.
- **Boating:** This prescheduled activity begins with safety instructions. Boys and adults will be paired according to their swimming ability.
- **Shooting Sports:** No stay in Camp would be complete without a visit to the BB and Archery ranges. These prescheduled activities begin with safety instructions.
- **Outdoor Cooking:** During your stay in Camp, one meal will be prepared in the campsite. The Commissary Staff will deliver the food to you campsite.
- **Campfire:** Weather permitting, your first night at Camp will offer this long-standing tradition. Supervised campsite Campfires are also permitted.
- **Closing Campfire:** Last evening of Session - Parents and Friends are welcome to attend the Campfire.
- **Fishing:** Boys with adult supervision can spend some relaxing time fishing from the shore of the lake. This can be elected instead of an advancement program.
- **Orienteering:** Scouts will have an opportunity to learn how to use a compass.
- **Games:** These events will be a challenge to all, involving physical fitness, imagination and good old fashioned fun.

Leader Orientation Dates

Day Camp – Thursday, April 18, 2010, 1:00 PM at the Marlin Miller Conference Center,
Hawk Mountain Scout Resevaion, Hawk Mountain Council

Webelos Extended – Sunday, May 16, 2010 at the Willits Dining Hall, Hawk Mountain
Scout Reservation 1:00 PM

Cub Resident Camp – Sunday, May 16, 2010 at the Willits Dining Hall, Hawk Mountain
Scout Reservation 3:00 PM

